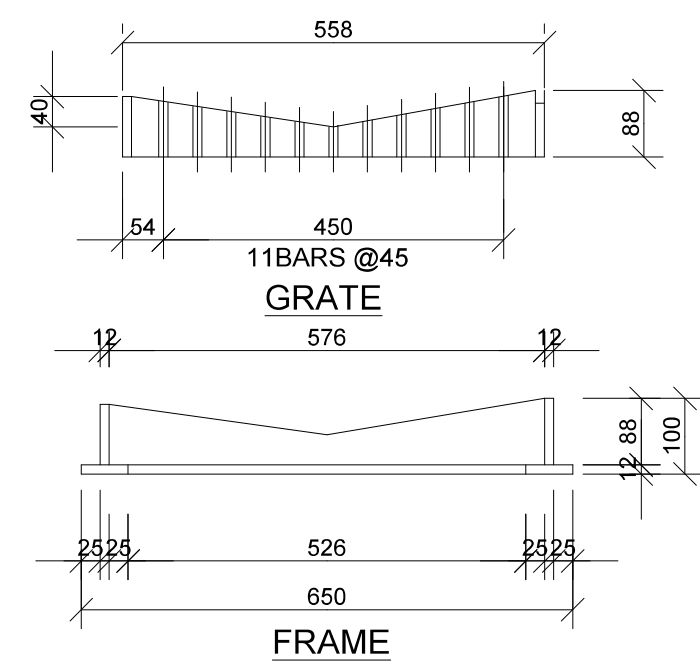
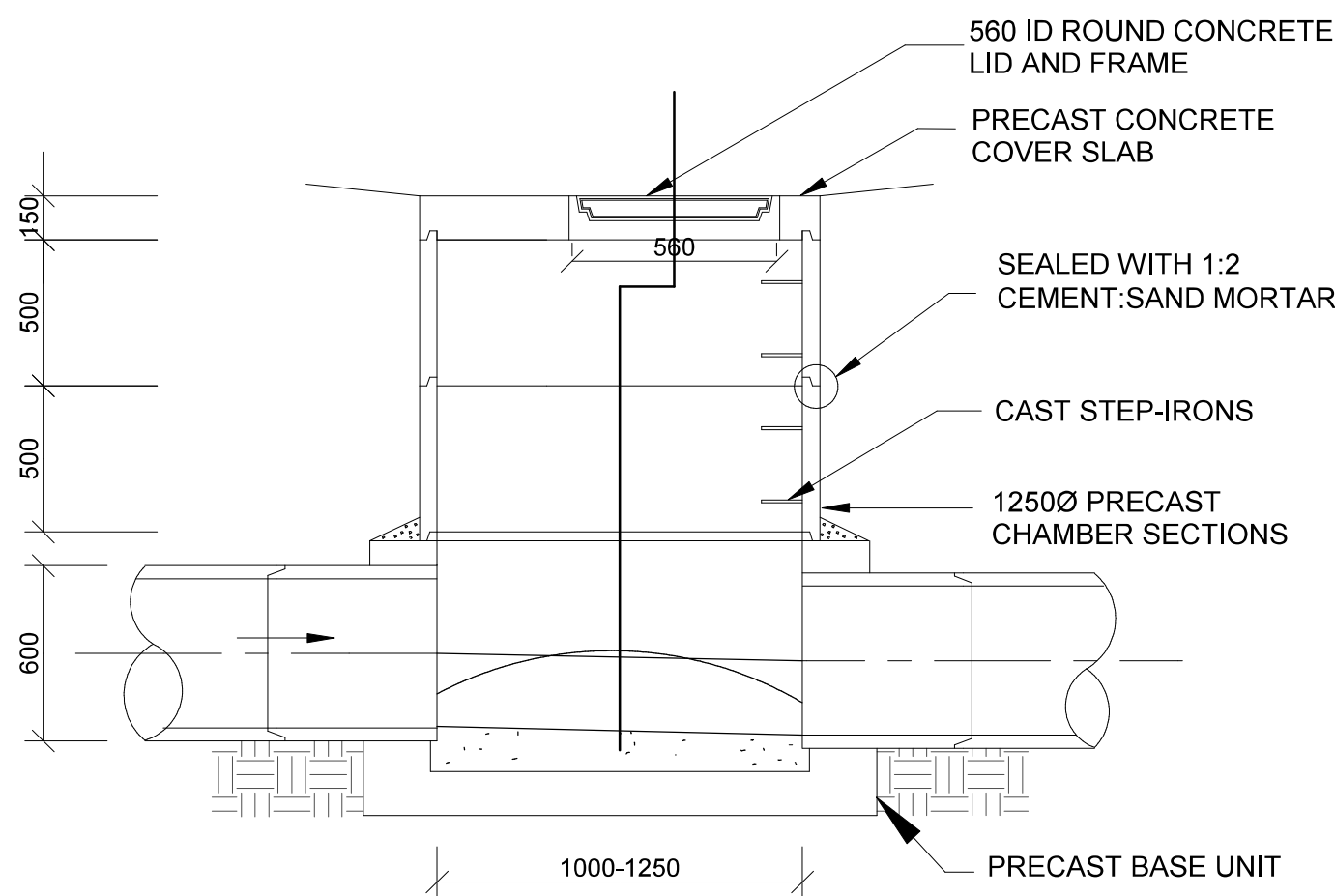


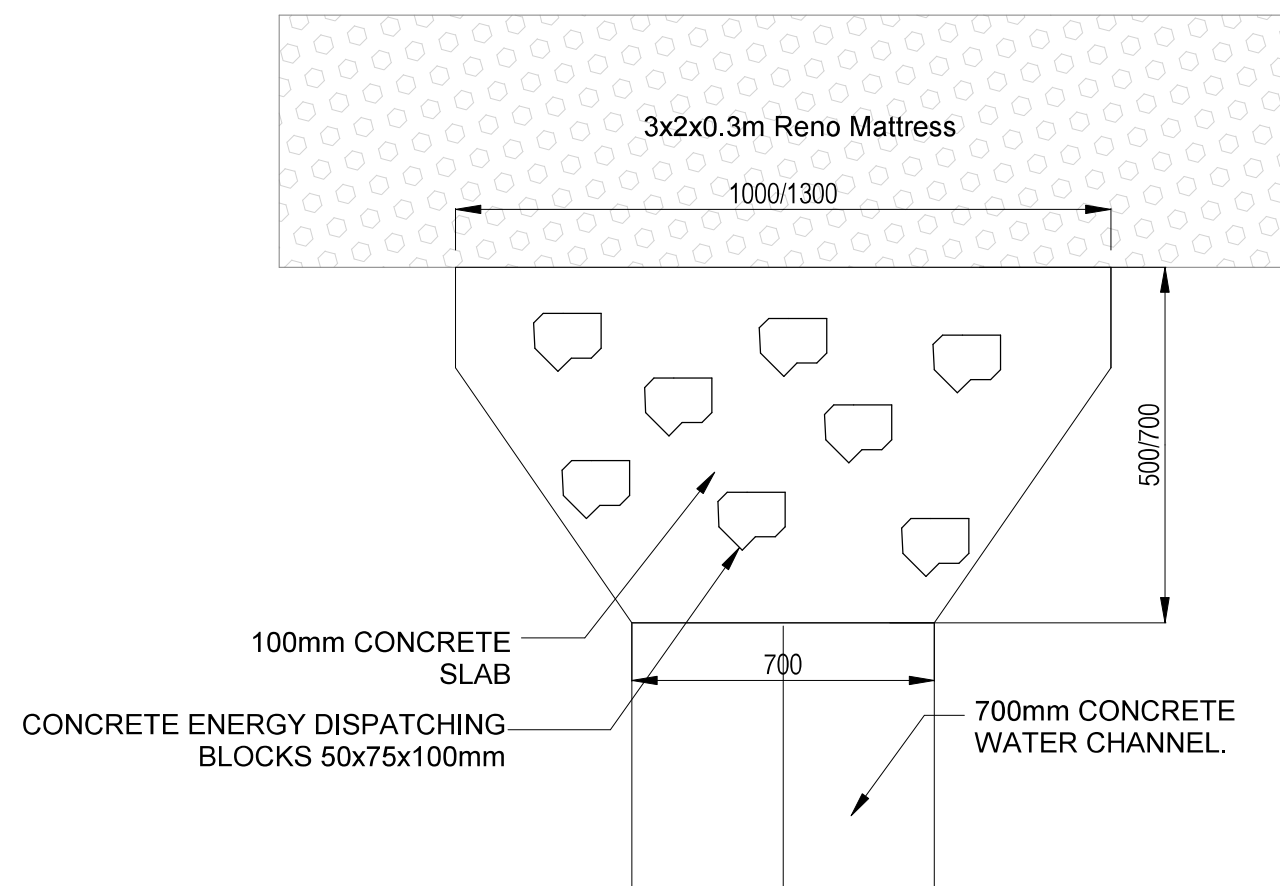
TYPICAL CATCHPIT DETAIL
SCALE 1:20 (A1)



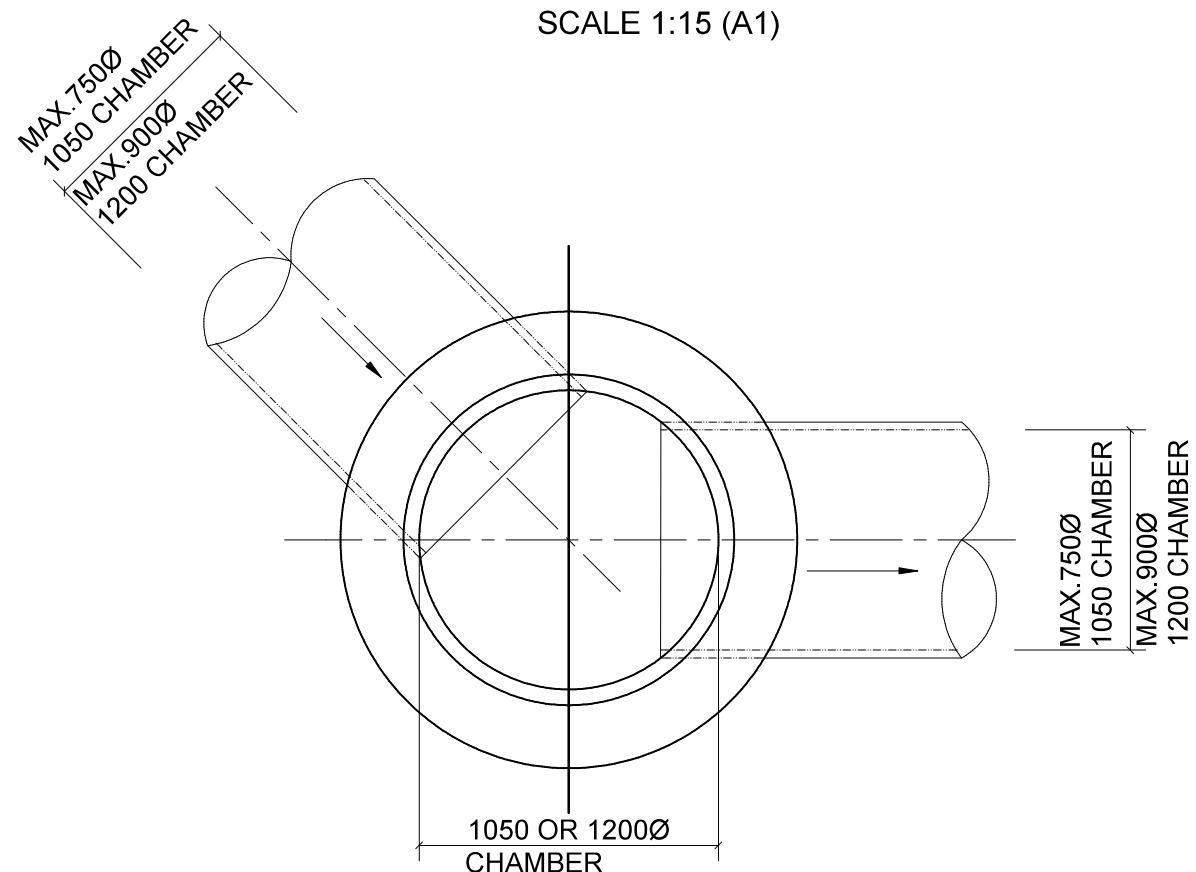
DETAIL OF OPEN GRATE & FRAME
SCALE 1:10 (A1)



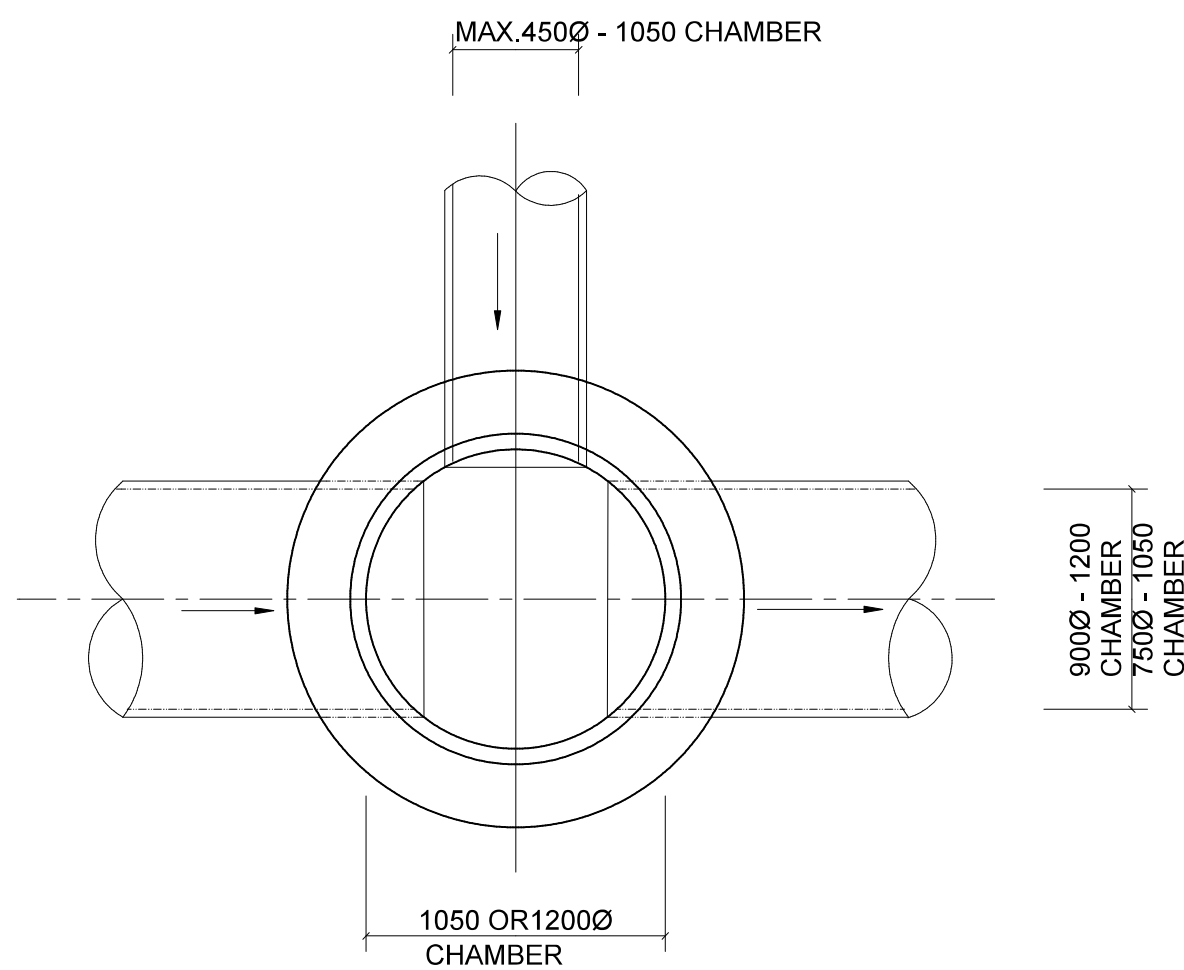
**TYPICAL STORMWATER MANHOLE
LESS THAN 2000mm DEEP**
SCALE 1:20 (A1)



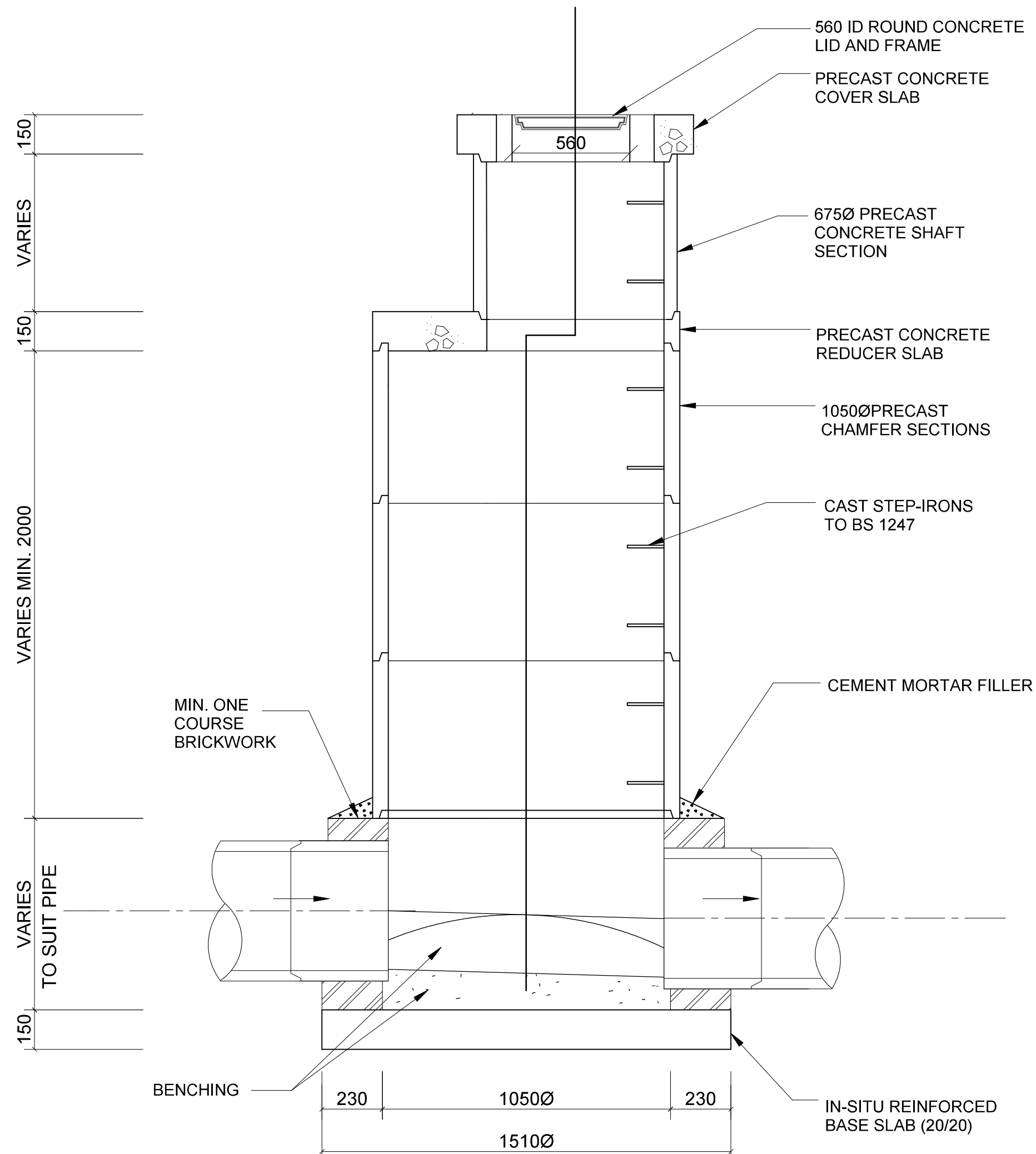
STORM WATER SPREADER
SCALE 1:15 (A1)



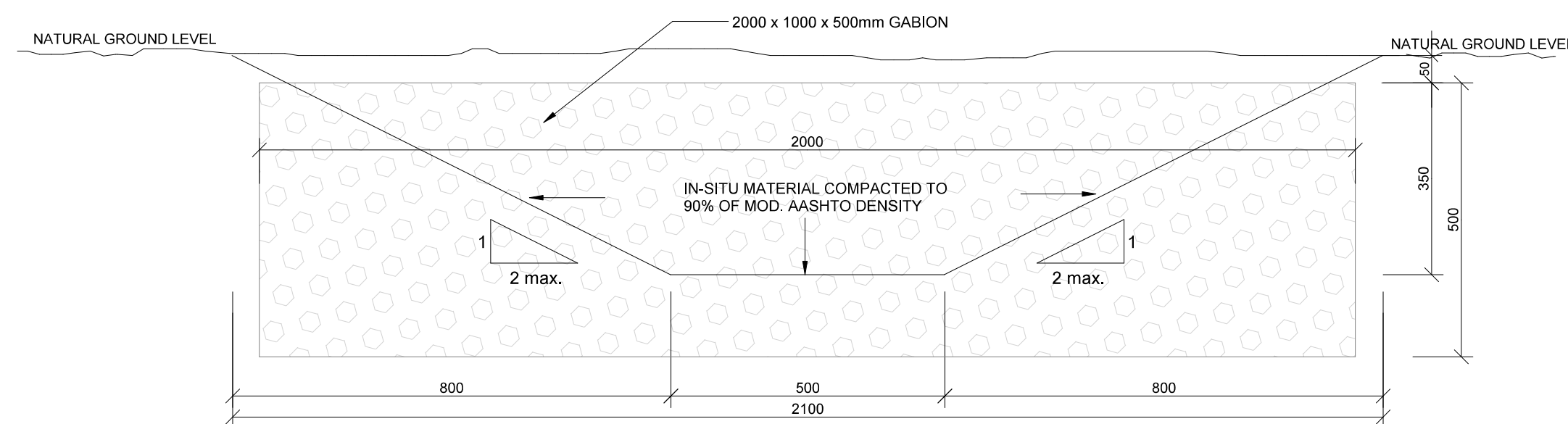
**135° BEND - TYPE C
SHOWING MAX. SIZE PIPES**
SCALE 1:20



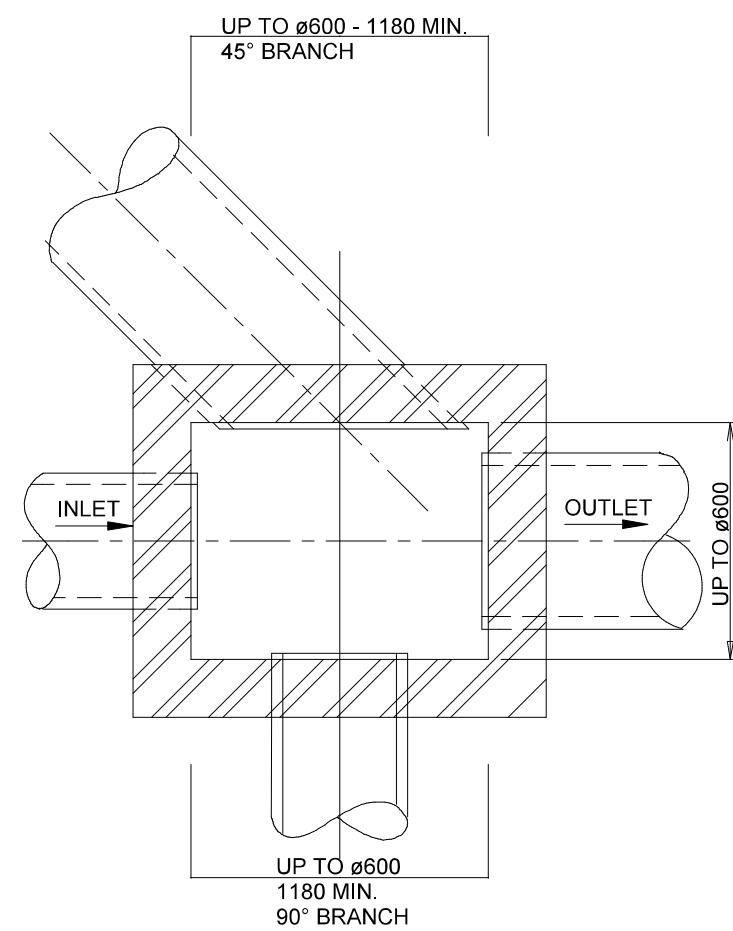
**TEE JUNCTION
SHOWING MAX. SIZE BRANCH FOR MAX. SIZE MAIN**
SCALE 1:20



**TYPICAL STORMWATER MANHOLE
GREATER THAN 2000mm DEEP**
SCALE 1:20 (A1)



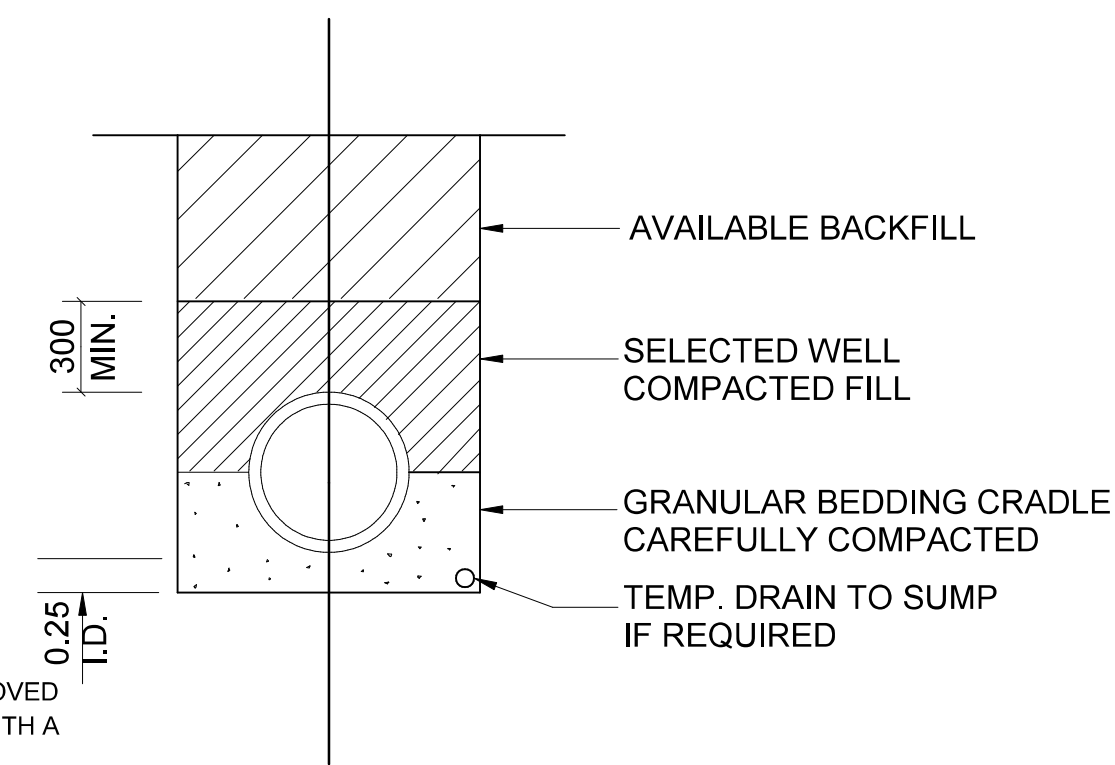
TYPICAL SECTION THROUGH STORMWATER OUTLET FURROW
SCALE 1:10 (A1)



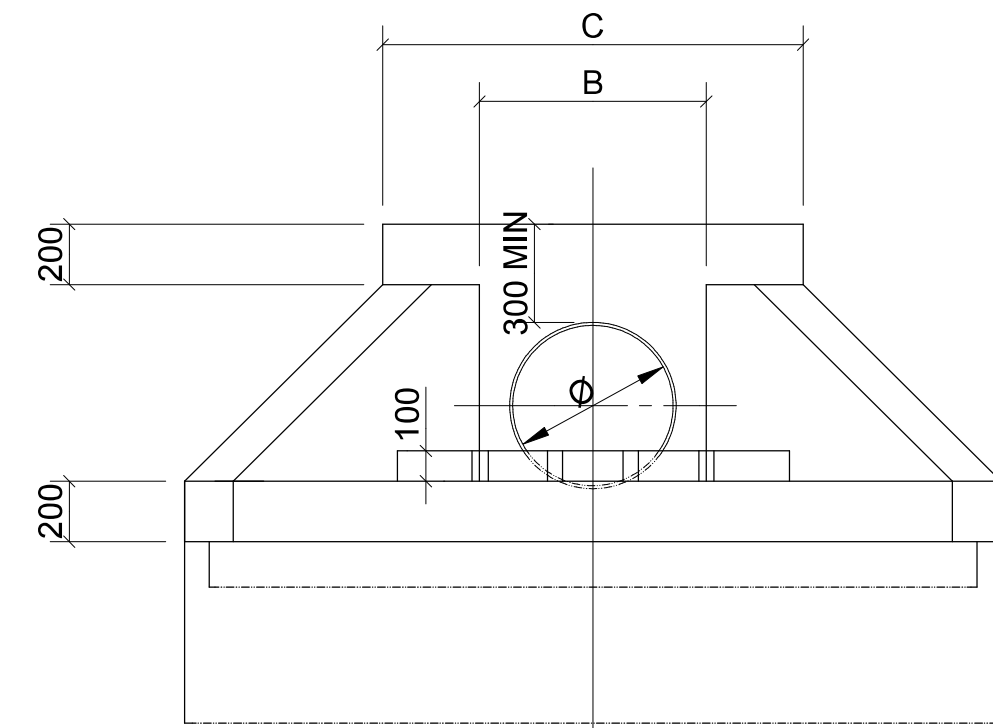
**CATCHPIT SIZES (SHOWING SIZES
FOR VARIOUS PIPES)**
SCALE 1:20

PIPE Dia.	TRENCH WIDTH
450	850
525	925
600	1000
675	1575
750	1650
825	1725
900	1800

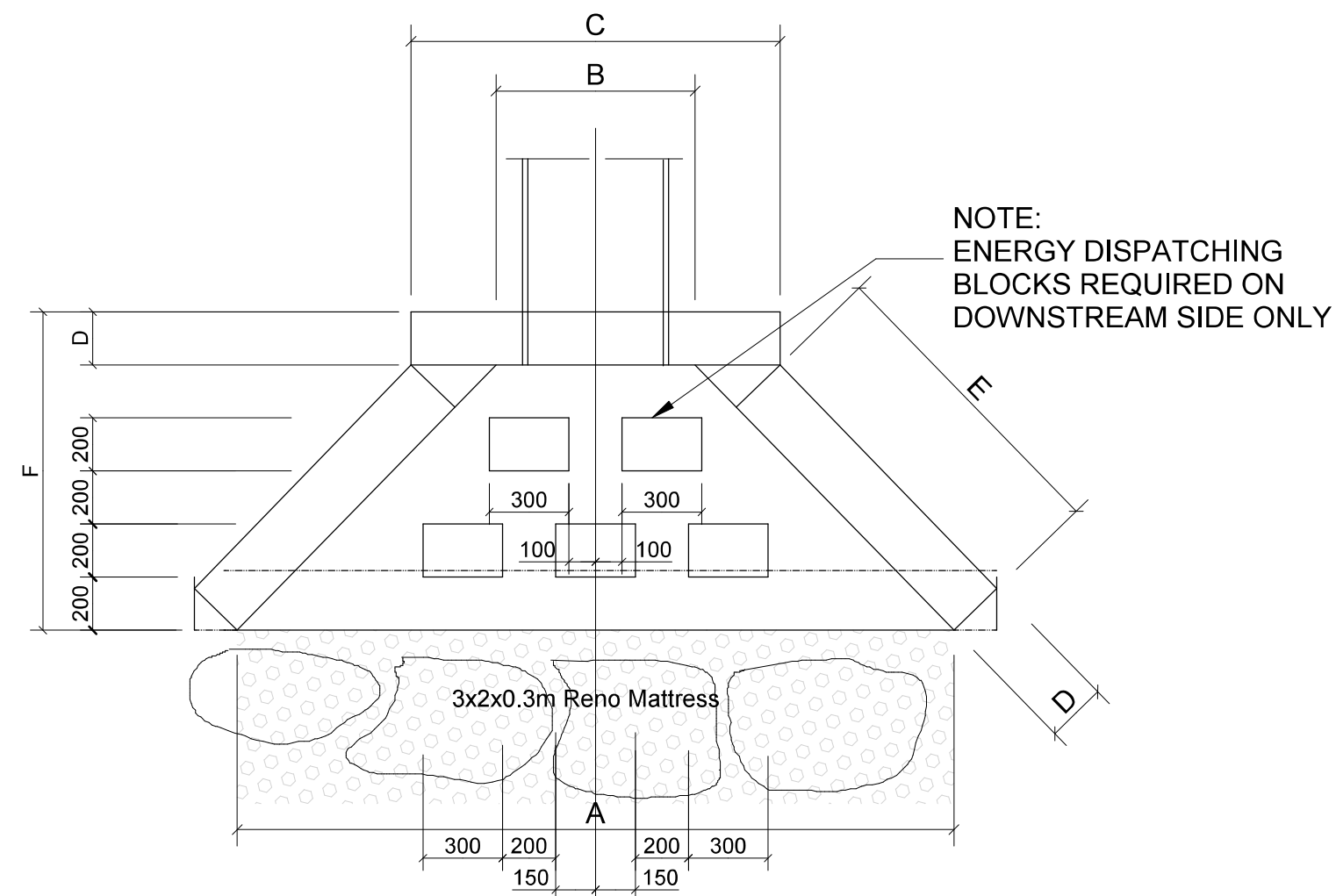
NOTE:
BEDDING SHALL BE OF AN APPROVED
SELECTED GRAVEL MATERIAL WITH A
PI NOT EXCEEDING 6.
BEDDING MATERIAL SHALL BE COMPAC-
TED TO 90% OF MOD. AASHTO DENSITY.



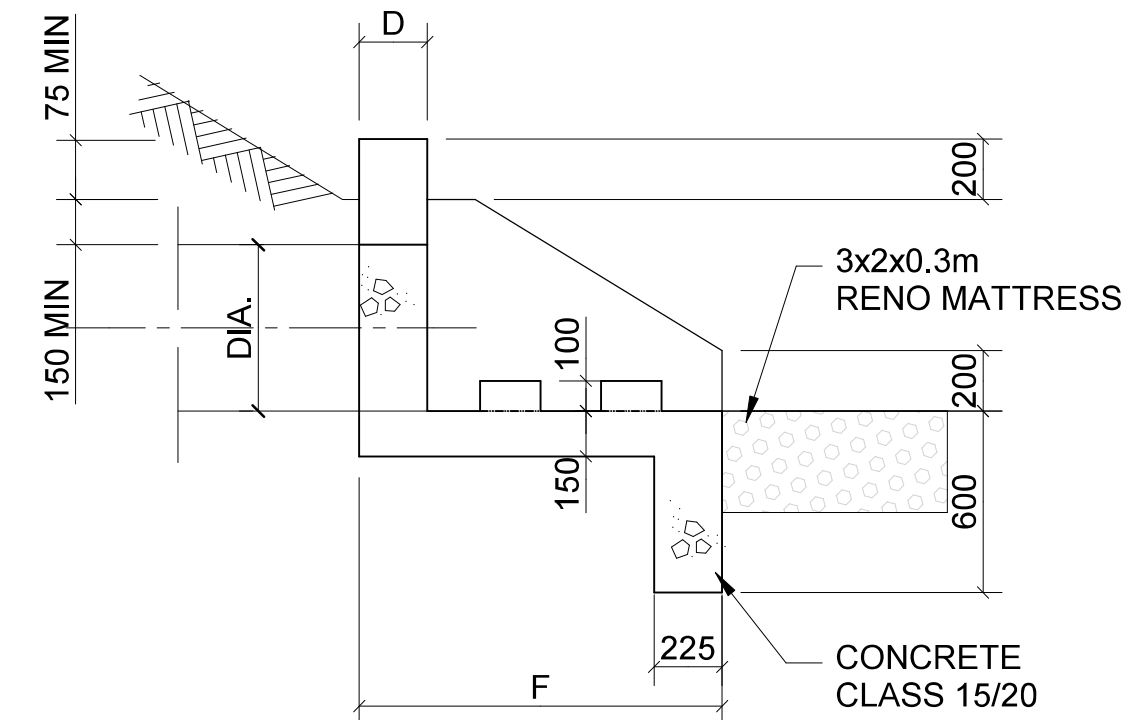
CLASS B BEDDING
SCALE 1:25 (A1)



WINGWALL OUTLET
SCALE 1:25 (A1)



WINGWALL LAYOUT
SCALE 1:25 (A1)



WINGWALL SECTION
SCALE 1:25 (A1)

HEADWALL DIMENSIONS						
DIA.	A	B	C	D	E	F
450	2200	600	1160	200	930	1000
375	1600	470	950	200	750	950

GENERAL NOTES

- THIS DRAWING IS COPYRIGHT RESERVED AND REMAINS THE PROPERTY OF SKCM.
- ALL DRAWINGS TO BE READ IN CONJUNCTION WITH THE ARCHITECTS DRAWINGS.
- ALL WORK TO BE EXECUTED IN STRICT COMPLIANCE WITH SANS 10400 & SABS 1200.
- ALL DIMENSIONS TO BE CHECKED ON THE SITE AND ANY DISCREPANCIES TO BE REPORTED TO THE ARCHITECTS/ENGINEER IMMEDIATELY BEFORE COMMENCING WITH ANY WORK.
- WRITTEN DIMENSIONS TO BE USED IN PREFERENCE TO SCALED DIMENSIONS.
- DRAWINGS MAY NOT BE SCALED FROM PRINTS DUE TO DISTORTION OF PRINTS.

NO	DATE	AMENDMENT
TD0	2023/05/24	ISSUED FOR TENDER.

COPYRIGHT IS VESTED IN THIS DOCUMENT
AND NO USE OR REPRODUCTION OR
DUPLICATION THEREOF MAY OCCUR
WITHOUT THE WRITTEN CONSENT OF THE AUTHOR.



architects
MPANDE CONSULTANTS



project
DOE Portfolio Programme

ESTABLISHMENT OF
HILLBROW SCHOOL

drawing title
**CIVIL DETAILS B,
STORMWATER**

scale	designed
AS SHOWN	AMP
date	drawn
25 OCT 2022	HJV
checked	checked
TENDER	MLX
discipline	EMIS
CE/SE	200500494
drawing number	revision
F0279 - 301	TD0